

## RJI RJ45 jack Cat.5 SMT angled

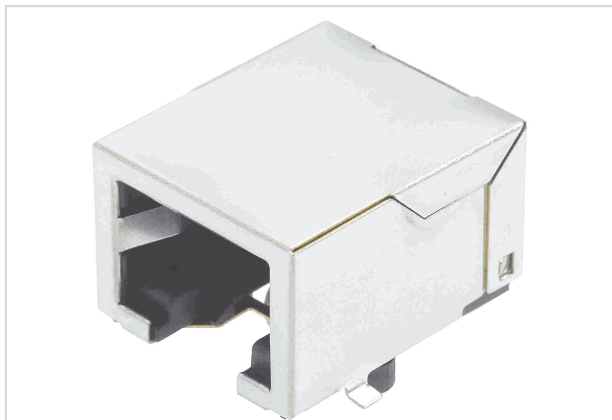


Image is for illustration purposes only. Please refer to product description.

Part number	09 45 551 1100
Specification	RJI RJ45 jack Cat.5 SMT angled
HARTING eCatalogue	<a href="https://b2b.harting.com/09455511100">https://b2b.harting.com/09455511100</a>

### Identification

Category	Connectors
Series	HARTING RJ Industrial®
Element	Female
Specification	RJ45 Angled

### Version

Termination method	Reflow soldering termination (SMT)
Shielding	Fully shielded, 360° shielding contact
Number of contacts	8
Pack contents	Tray

### Technical characteristics

Rated current	1.5 A
Rated voltage	125 V
Transmission characteristics	Cat. 5 Class D up to 100 MHz
Data rate	10 Mbit/s 100 Mbit/s 1 Gbit/s 2.5 Gbit/s
Limiting temperature	-40 ... +85 °C
Mating cycles	≥750
Degree of protection acc. to IEC 60529	IP20



Pushing Performance  
Since 1945

## Material properties

RoHS	compliant
ELV status	compliant
China RoHS	e
REACH Annex XVII substances	Not contained
REACH ANNEX XIV substances	Not contained
REACH SVHC substances	Not contained
California Proposition 65 substances	Yes
California Proposition 65 substances	Lead Nickel

## Specifications and approvals

Approvals	DNV GL
UL / CSA	UL 1977 DUXR2.E254191 CSA-C22.2 No. 182.4, No. 233-09 DUXR8.E254191

## Commercial data

Packaging size	120
Net weight	4 g
Country of origin	Taiwan
European customs tariff number	85366990
GTIN	5713140061491
eCl@ss	27460201 PCB connector (board connector)